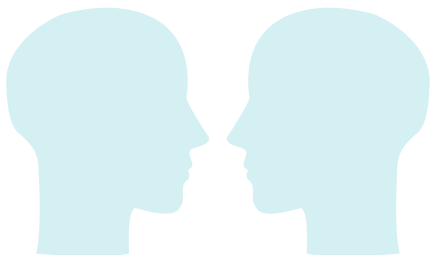


These common diagnosis are **NO** longer allowed by CMS 1/1/20

Any symptom code: MUST CODE THE REASON FOR THE SYMPTOM

DIAGNOSIS NOT ALLOWED	EXAMPLES OF ALTERNATIVE DIAGNOSES
➤ M62.81 - Muscle Weakness (generalized)	● CHF exacerbation with residual muscle weakness
➤ R26.89 - Other abnormalities of gait and mobility	● OA of knees; DM with peripheral neuropathy, myositis, PVD, CAD
➤ M54.5 - Low back pain	● OA lumbar spine, spinal stenosis
➤ R26.81 - Unsteadiness of feet	● Diabetic neuropathy, late effects CVA
➤ M25.561/M25.562 - Pain in right/left knee	● OA, RA
➤ M25.551/M25.552 - Pain in right/left hip	● OA, RA
➤ R29.6 - Repeated falls	● Bradycardia, tachycardia, hypotension, vertigo
➤ R13.10 - Dysphagia, unspecified	● Esophageal dysphagia, oropharyngeal dysphagia
➤ M54.9 - Dorsalgia, unspecified	● Spinal Stenosis, OA spine, lumbar sprain/strain
➤ M25.511/M25.512 - Pain in right/left shoulder	● OA shoulder, rotator cuff tear



Face To Face Requirements

- Related to and state reason for home health
- Support of homebound status
- No more than 90 days prior to 30 days following home health admit.
- Appropriate diagnosis list